



MARICSA

MARINE REPAIR INDUSTRIAL
& CONVERSION S.A.



Who we are?

We are a renowned company headquartered in Panama City, founded by Naval Engineer David Cohen, an industry veteran with more than 30 years of experience in both the domestic and international spheres of marine repair.

We are authorized representatives of the Greek brand ERMA FIRST, manufacturers of ballast water treatment plants for vessels.

Our mission

We are a Panamanian company dedicated to providing immediate and exceptional marine repair and conversion solutions with unwavering quality, innovation, and client satisfaction.

Our vision

We aim to become the leading company in Panama in vessel repairs, conversions, and related services, driven by continuous improvement in our internal production systems. With a commitment to quality, excellence, and timely solutions, we not only strive to surpass customer expectations within a safe environment but also promote social responsibility, contributing to the betterment of our community and the marine industry.



Services we provide:

- Inspections
- Mechanics & machining
- Quality Control
- Welding, Metal and Structural
- Electricity

Inspections

- Professional marine services: inspections, surveys, valuations, and engineering development for marine and industrial conversions.
- Our experienced mechanics are proficient in conducting intermediate shaft bearing inspections. With meticulous attention to detail, they perform thorough examinations of the intermediate shaft bearings to assess their condition and detect any signs of wear, damage, or misalignment. These inspections involve disassembly, visual examination, measurements, and analysis of the bearing components.
- Our skilled mechanics utilize their expertise to accurately interpret inspection results and provide recommendations for necessary repairs or maintenance to ensure optimal performance and longevity of the intermediate shaft bearings.

Mechanics & Machining

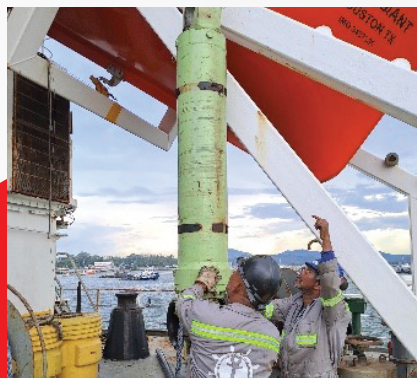


• Marine Repair Industrial has established itself as a pioneer in high-profile afloat repairs worldwide, thanks to our team of engineers who have developed unique techniques over the past 30 years. Our engineers' expertise and innovative approach have propelled us to the forefront of the industry, allowing us to tackle complex repair challenges with exceptional skill and precision. We take pride in our track record of success and continue to push the boundaries of afloat repair, setting new standards for excellence in the field.

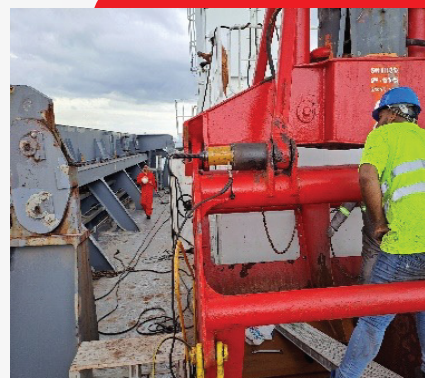
• Our company prides itself on possessing state-of-the-art specialized machinery that ensures minimal deviation errors, enabling us to meticulously achieve Wartsila's precise tolerances for Babbitt bushings used in stern tube shaft bearings.

• We excel in executing extensive afloat repairs within the propulsion system domain. Our comprehensive range of services encompasses the professional removal of propellers, withdrawal of tail shafts, and the meticulous renewal of Babbitt bushings. Throughout the entire repair process, we uphold the highest standards of precision, attention to detail, and adherence to industry regulations.

• We possess extensive experience in machining various types of bushings and bearings, taking into consideration their specific expansion coefficients. Our skilled machinists have a deep understanding of the materials and thermal properties involved, enabling us to select the most suitable machining techniques and tolerances to ensure optimal performance and longevity of the bushings and bearings.



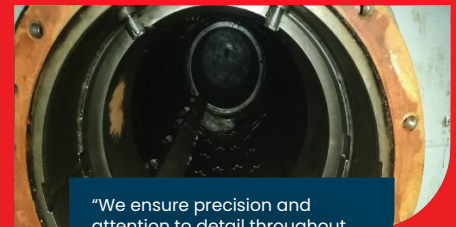
"Specializing in rapid adaptation to extreme maneuvers is our expertise".



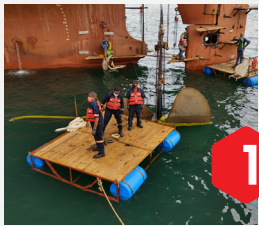
"We specialize in machinery and control systems for all types of vessels, ensuring reliability and quality".

Quality Control

- Our workshop excels in conducting precision work on lower pintle bushes. With utmost care and precision, our skilled technicians meticulously handle the task, ensuring precise measurements, accurate machining, and meticulous installation of the lower pintle bush. We prioritize attention to detail and employ advanced techniques to deliver exceptional results that meet the highest quality standards.
- Our services team includes engineers with extensive experience in our mechanical workshop. This experience encompasses conducting comprehensive inspections of the Aft Simplex seal box and managing all tasks associated with the inspection process, from disassembly to repair and testing. Our services engineers are highly trained to perform these tasks with precision and ensure the proper functioning of the seal box.
- Our services mechanic group is diligently preparing for laser alignment and thoroughness during a major damage repair on the stern tube. With meticulous attention to detail, we will utilize laser alignment techniques to ensure precise alignment and positioning of the stern tube components. Our team is well-versed in handling complex repair situations, and we will work diligently to restore the stern tube to its optimal condition. Our commitment to thoroughness guarantees that every aspect of the repair process will be meticulously addressed to deliver exceptional results.
- We have the flexibility to send any services engineers from any manufacturer to assist us in our operations. We welcome collaboration and value the expertise brought by external engineers. Rest assured that our team will work closely with your engineer, ensuring seamless coordination and adherence to high standards throughout the process. We prioritize efficiency and minimize delays to ensure a smooth and productive partnership that delivers exceptional results.



"We ensure precision and attention to detail throughout the entire process".

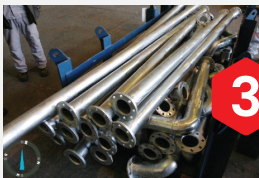


1

Welding, Metal and Structural



2



3



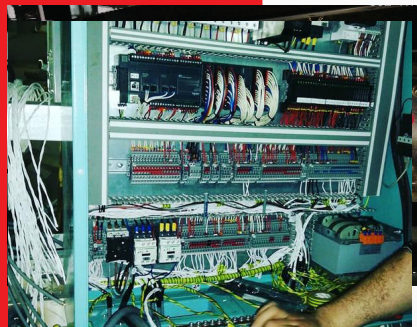
4



5

- The successful removal of the rudder blade from the vessel's rudder horn requires a combination of years of experience and comprehensive education. Our team possesses the necessary expertise to execute this task efficiently and safely. With meticulous attention to detail, we carefully disassemble the rudder blade from the rudder horn, taking all necessary precautions to ensure the integrity of the components. Our team's knowledge and skills enable us to perform this procedure with precision, maintaining the highest standards of quality and safety throughout the entire process.
- In collaboration with propeller specialists, we have conducted extensive studies on optimizing propulsive efficiency without sacrificing power and encountering any vibrations. Through careful analysis and advanced techniques, we have achieved excellent results in achieving an effective propulsion system. Our approach ensures that the propellers are carefully selected and optimized for the specific vessel, considering factors such as hydrodynamics, cavitation, and resistance. The result is a propulsion system that maximizes efficiency, minimizes power loss, and ensures smooth operation with zero vibrations.
- We specialize in the production of galvanized pipes for ballast systems. Our galvanized pipes are specifically designed to meet the requirements of ballast systems, offering durability, corrosion resistance, and long-lasting performance. We utilize high-quality materials and advanced manufacturing techniques to ensure the production of reliable and efficient galvanized pipes. Our pipes undergo rigorous quality control processes to meet industry standards and regulations. Whether it's for new installations or replacement projects, our galvanized pipes for ballast systems are a trusted choice for reliable and efficient water management on vessels.
- Our company specializes in the design and construction of robust support bases specifically tailored for electrolytic cells used in 3000 m³ tanker vessels. These support bases are engineered to provide optimal stability, structural integrity, and durability for the efficient operation of the electrolytic cells. Our team of experts utilizes advanced design techniques and materials to ensure the highest standards of safety and performance. We understand the unique requirements of electrolytic cell installations on tanker vessels and are committed to delivering customized solutions that meet or exceed industry regulations and client specifications.
- Marine Repair Industrial & Conversion holds the exclusive capability to design, construct, and commission marine installations in the Republic of Panama. Our technical expertise is evidenced by the successful construction of over 5 plants, ranging in capacity from 300 m³ to 3000 m³, within tankers, LPG gas carriers, and general cargo vessels. We have consistently achieved excellent results in our projects.

Electricity



- Our team of electrical engineers specializes in the professional wiring of transformers, control panels, and power distribution boards. With extensive expertise in electrical systems, we ensure precise and efficient wiring connections that adhere to industry standards and safety regulations. Whether it's the intricate wiring of transformers, the intricate assembly of control panels, or the robust wiring of power distribution boards, our skilled engineers employ their technical knowledge and attention to detail to deliver reliable and high-quality electrical installations. We understand the critical role of proper wiring in ensuring optimal performance and safety, and we strive to exceed our clients' expectations in every project.

- Marine Repair Industrial & Conversion is specialized in designing and constructing support structures for electrical panels and wiring, adhering to all classification society standards. Our expertise extends to the precise engineering of support structures, ensuring the proper installation and stability of electrical panels. Additionally, we excel in the meticulous wiring of electrical systems, following all regulatory requirements and industry best practices. Our commitment to quality and compliance guarantees that our designs and installations meet the highest standards set by classification societies.

- At Marine Repair Industrial & Conversion, our electrical engineers specialize in the design of copper busbars for power distribution panels. We employ advanced design techniques to ensure efficient and secure current distribution in electrical systems. Additionally, our team is equipped to carry out necessary construction and modifications in power distribution panels, adhering to the requirements set by the classification society. We ensure that all modifications and constructions are following the relevant standards and regulations to guarantee the safety and optimal performance of electrical systems on board vessels.

We also offer other exceptional range of services that reflects our commitment to excellence which include:

- Surface Preparation
- Painting
- Hydraulic Systems
- Underwater





Location

Office: Ave Ricardo J. Alfaro, The Golden Point Tower, Floor 22 office 01. Panama City - Republic of Panama

Workshop: Juan Diaz, Ciudad Radial, Calle 146 East Republic of Panama.

Office Hours:

Monday to Friday: 8:00 am - 5:00 pm

Saturday: 8:00 am - 12:00 pm



Workshop Hours:

Available 24/7 for assistance.

Contact:

Office: +507 309-0759

Phone: +507 6433-7515

Email: ventas@maricsa.com

